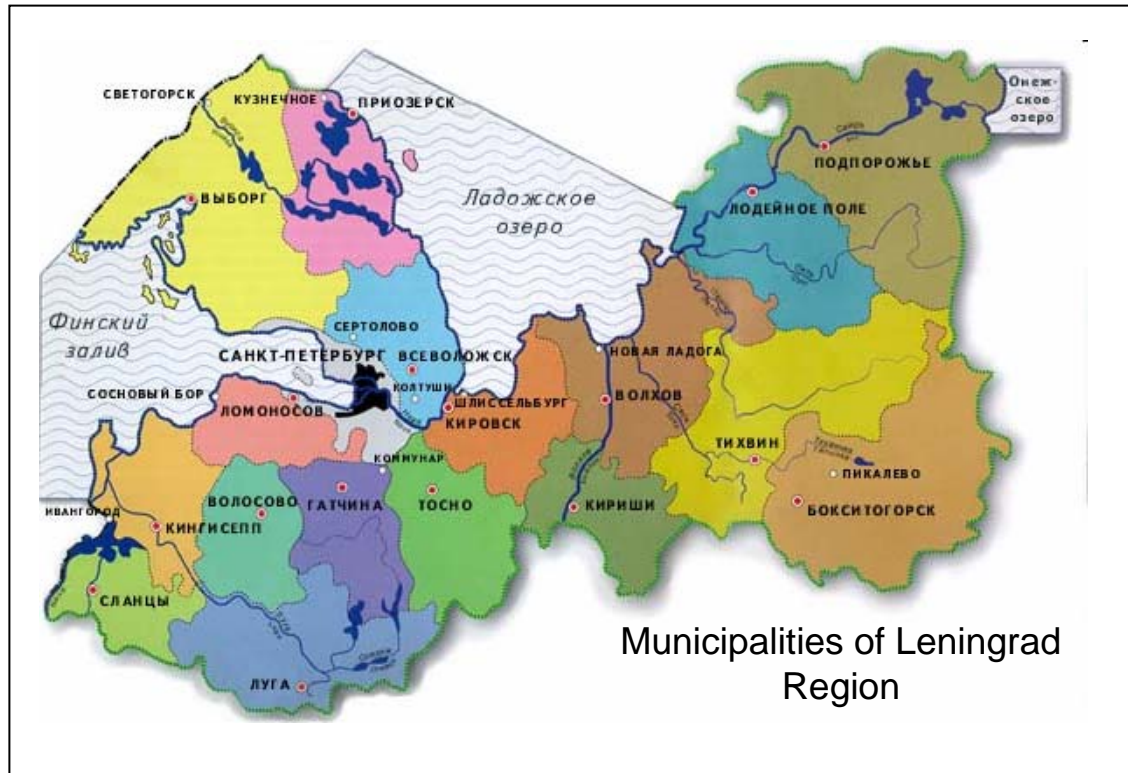




SME development measures in Leningrad Region 2006-2008

Leningrad Region in brief



Municipalities of Leningrad Region



Flag of Leningrad Region

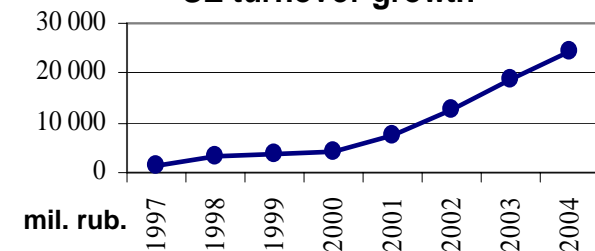


Coat of arms of Leningrad Region

Leningrad Region

- Borders with Finland Estonia
- Occupies 83908 km²
- 1800 lakes, Ladozhskoye lake is the greatest in Europe
- Population: 1.7 mln
- 5 sea ports
- 2 airports
- Governor: Valeriy Serdyukov
- 224 first level municipalities, 18 second level municipalities
- 63800 Small Enterprises (SE) in 2004
- Every third is employed in SE
- SE turnover: 28261 mil. rub.

Leningrad Region SE turnover growth



Committee on the Development of Small and Medium Sized Business and the Consumer Market

Support measures

within the framework of
regional programme
«Development and state
support of small business
in Leningrad oblast 2006-
2008»

*(regional law № 6-03 from
21.02.2006)*

in the activity sphere of
State Institution
«Leningrad Region Center
for Business Support»

*(before 06.02.2006 was
operating as State
Institution “Leningrad Legal
Bureau”)*

Priority spheres of small business development in 2006-2008

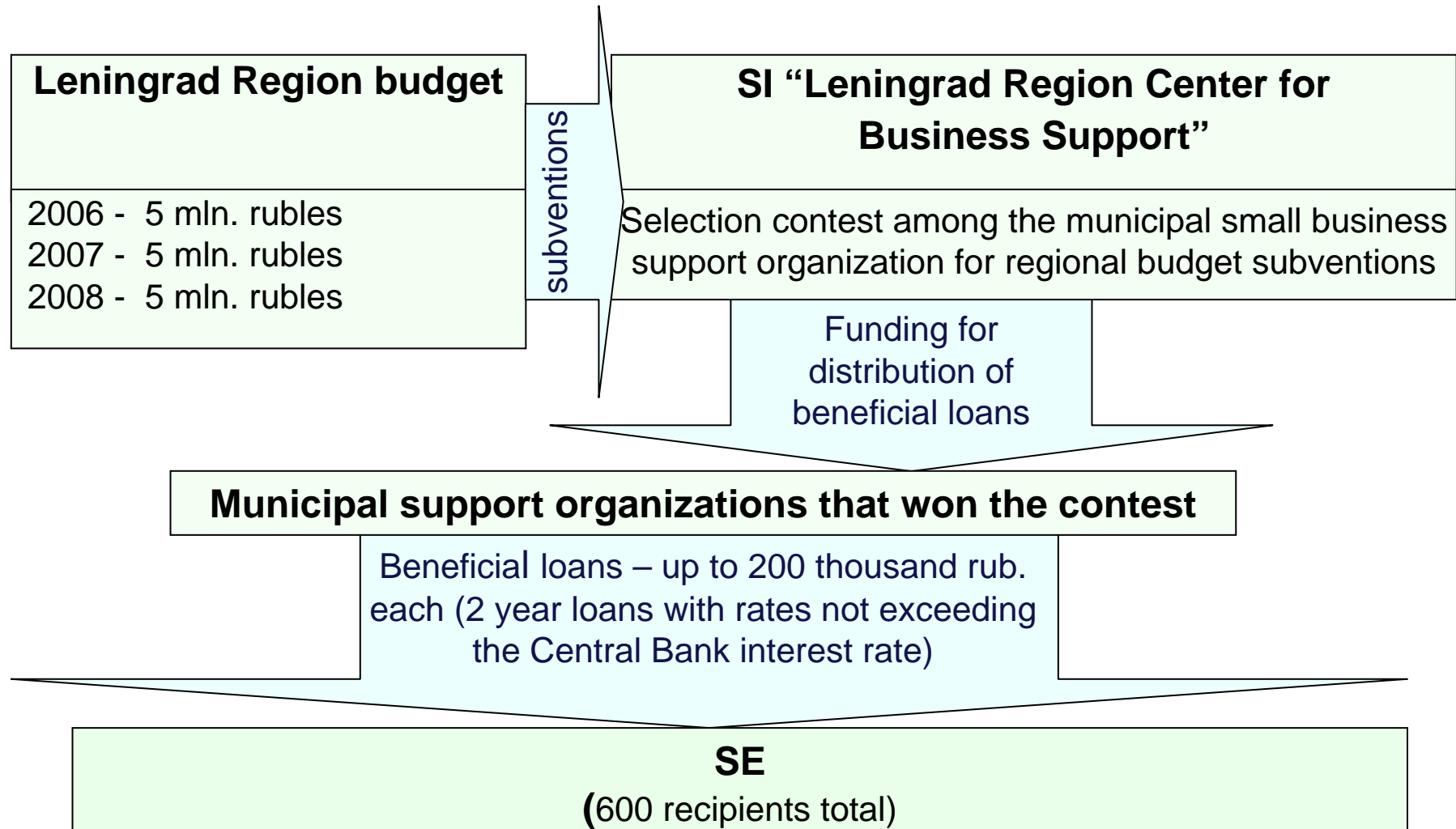
- **Housing services**
- **Communal services**
- **Tourism**
- **Social security**
- **Public health**
- **Public sport services**



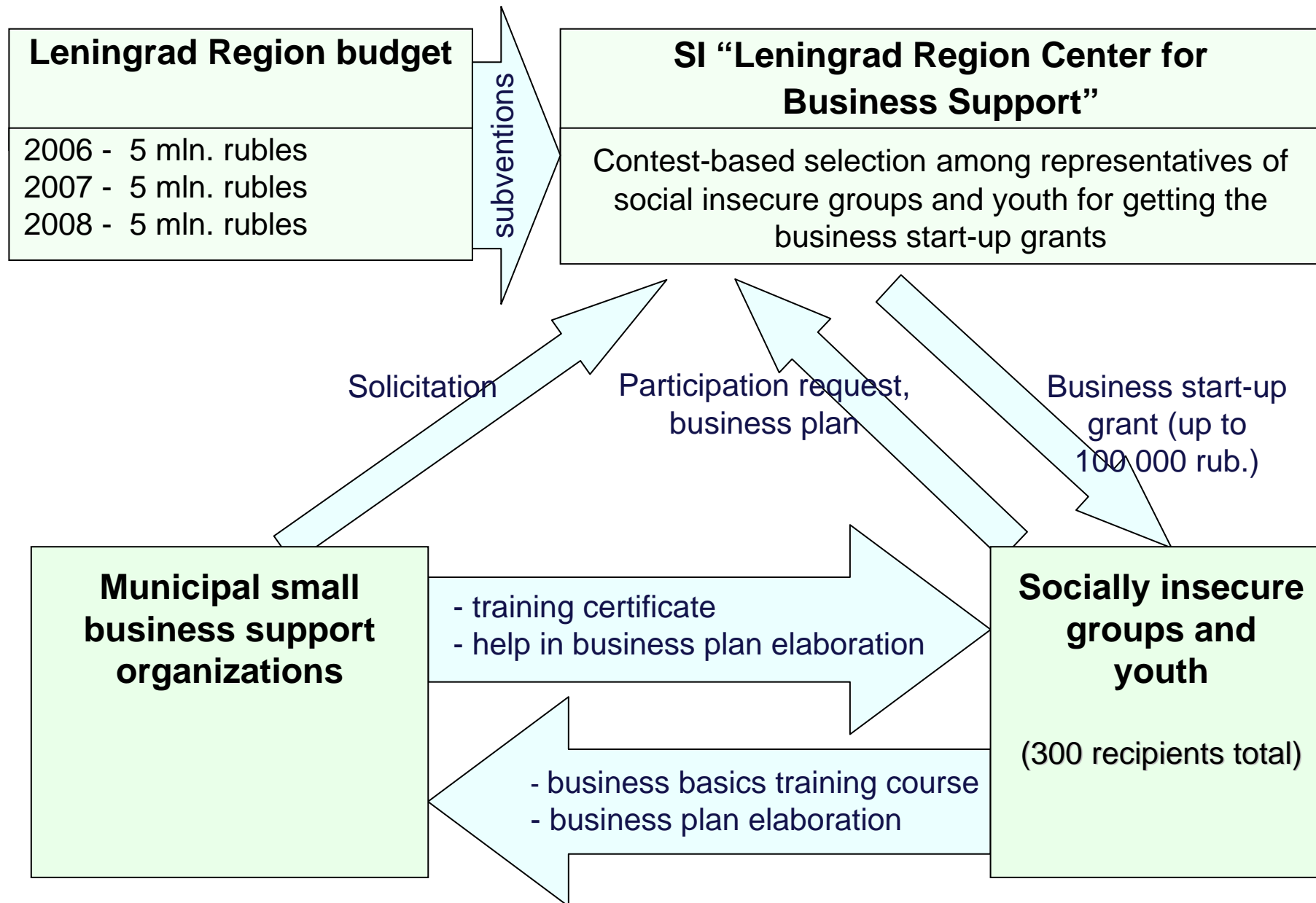
Main lines of support of small business in Leningrad Region in 2006-2008

Lines of support	Funding from regional budget (thousand rubles)	
	Total in 2006-2008	in 2006 only
• Extending access for small enterprises to the financial resources	50 000	12 500
• Provision of consultancy, training and information support	24 536	8 430
• Assistance in strengthening competitiveness, promotion of small enterprises products	8 710	2 230
• Assistance in negotiation and elimination the administrative barriers and obstacles on the way of small business development	1 500	450
Funding total	84746	23610

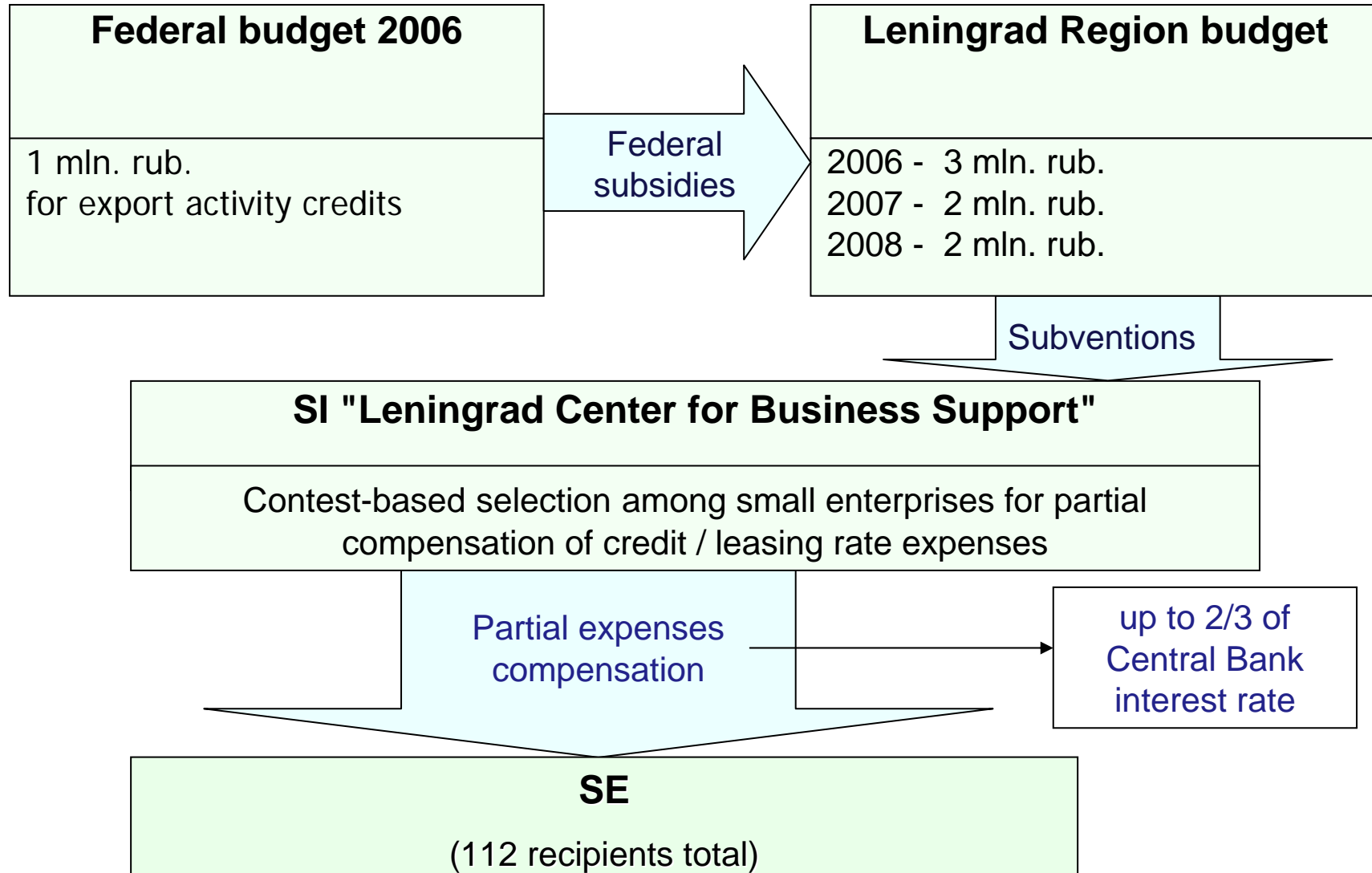
Distribution of beneficial loans to small enterprises (SE) operating in priority spheres on the depressed territories of Leningrad Region



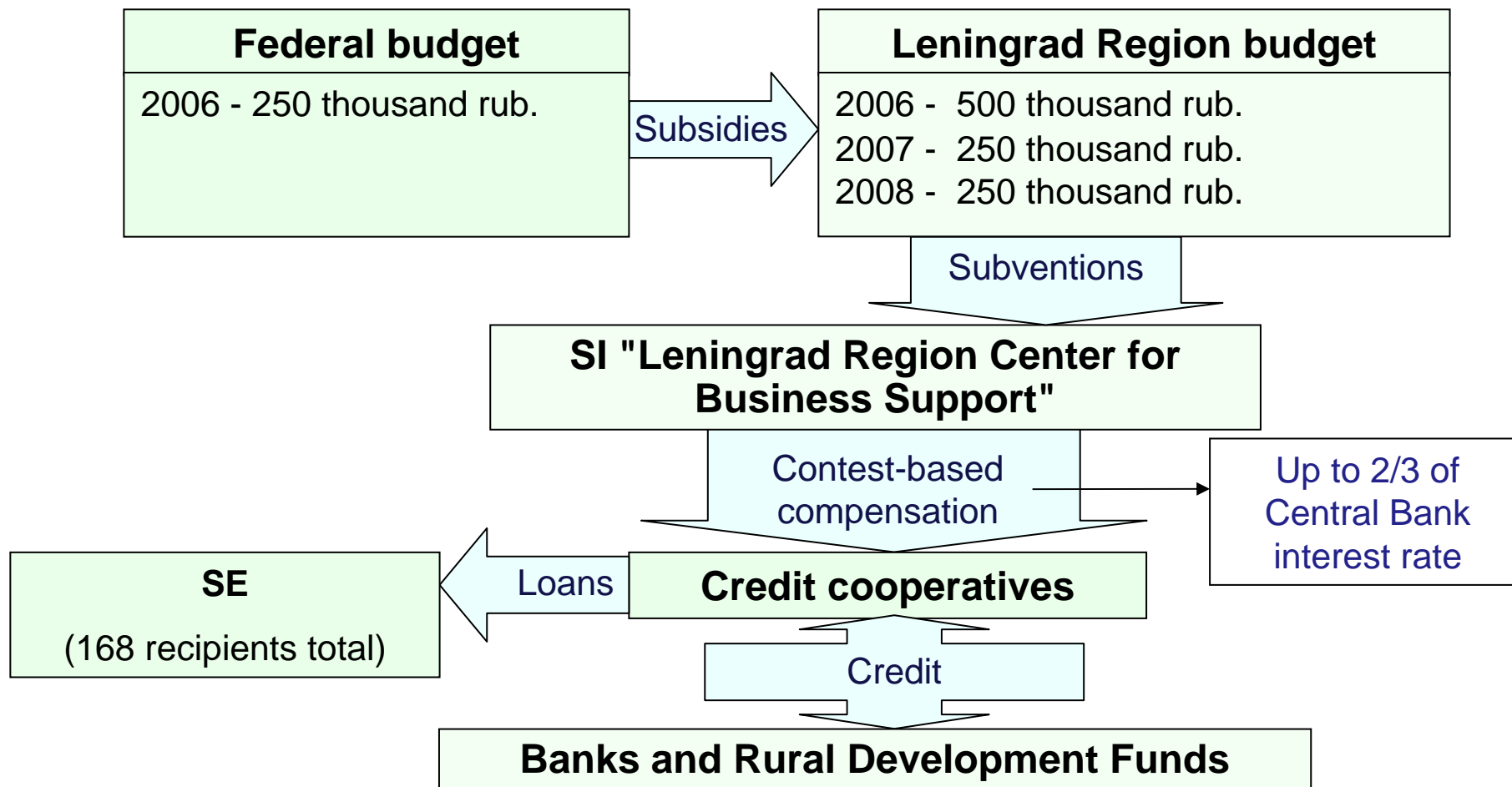
Business start-up grants for representatives of socially insecure population groups and youth



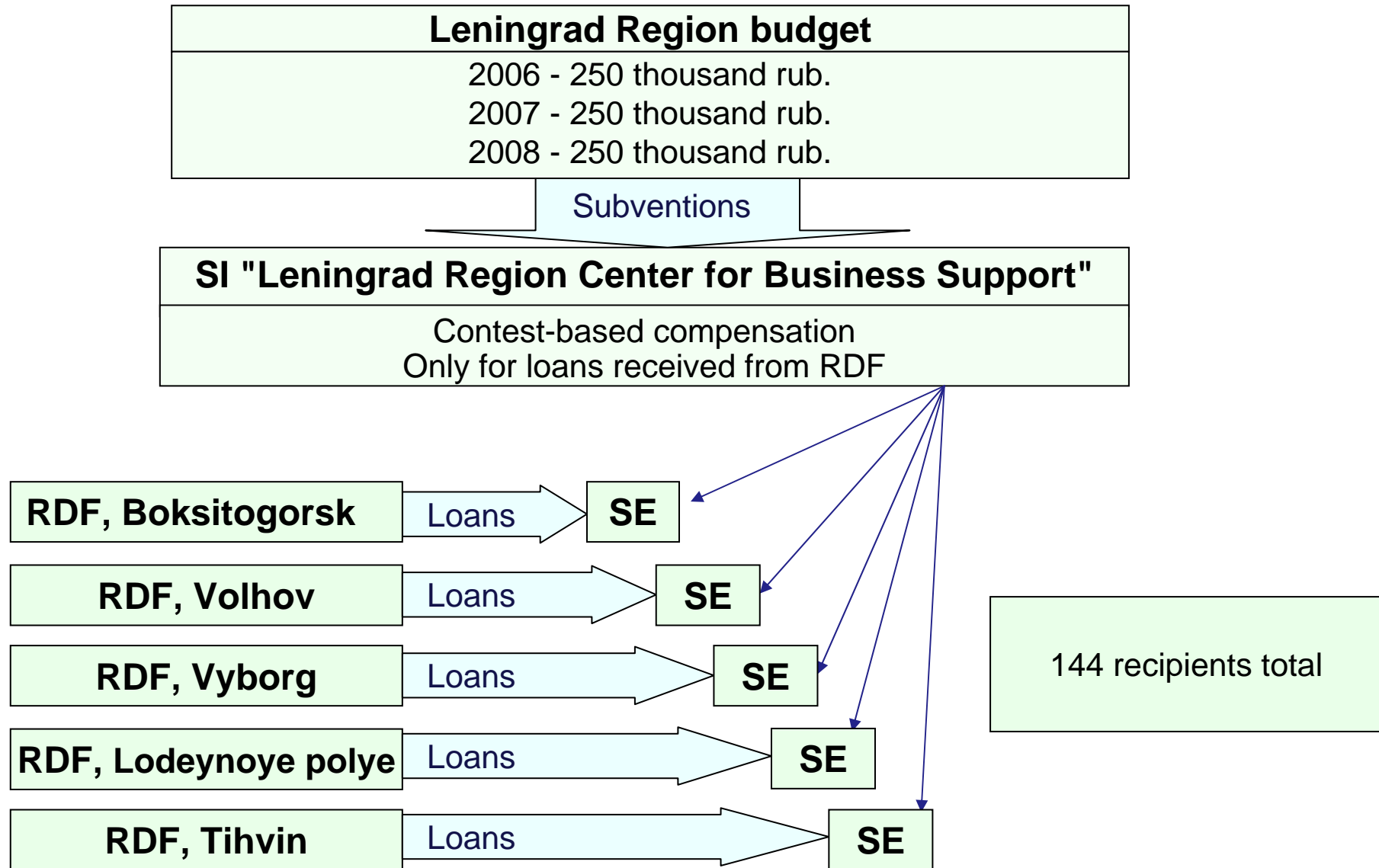
Partial compensation of credit / leasing rate expenses for SE



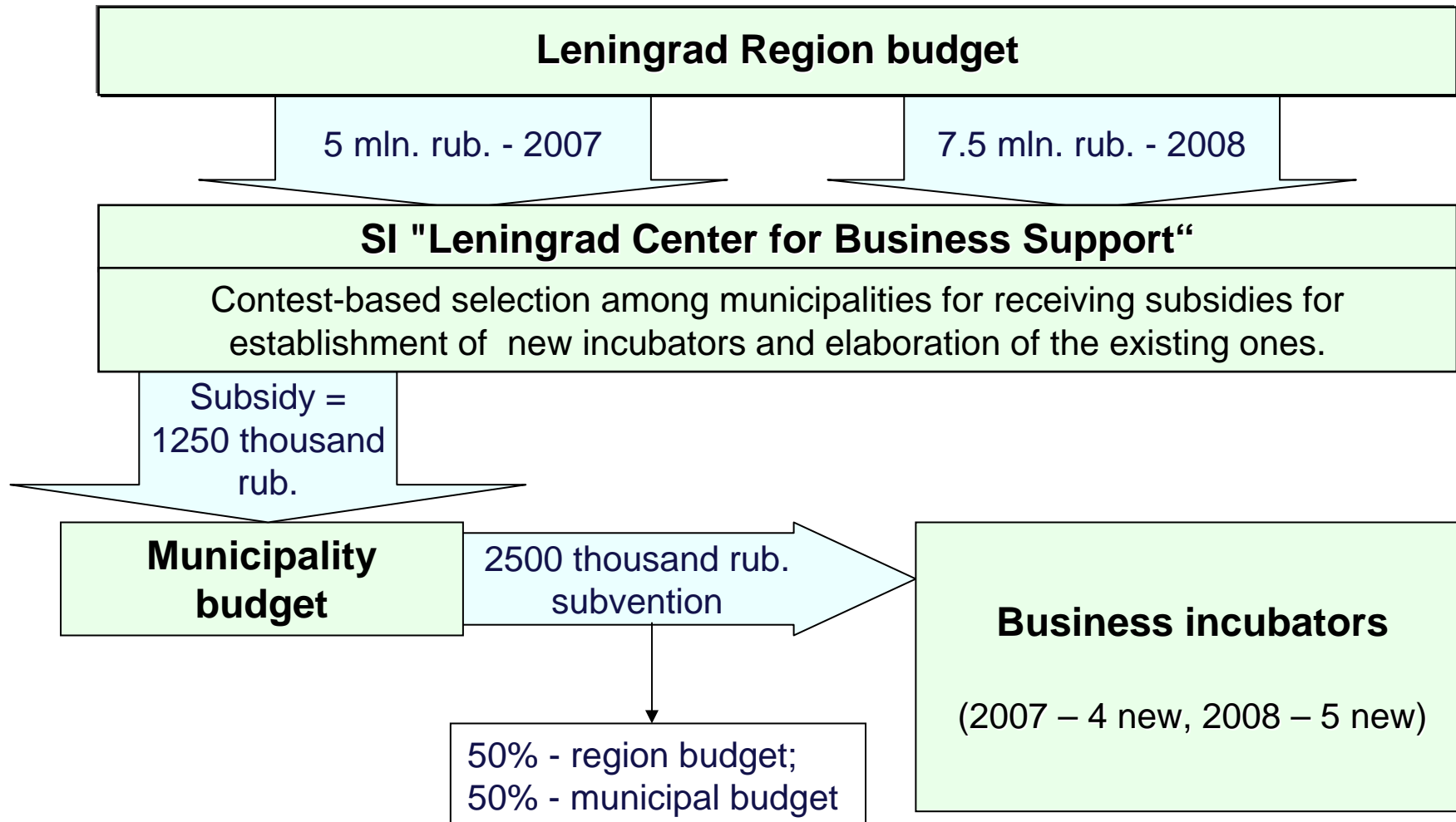
Partial compensation of credit rate expenses for credit cooperatives



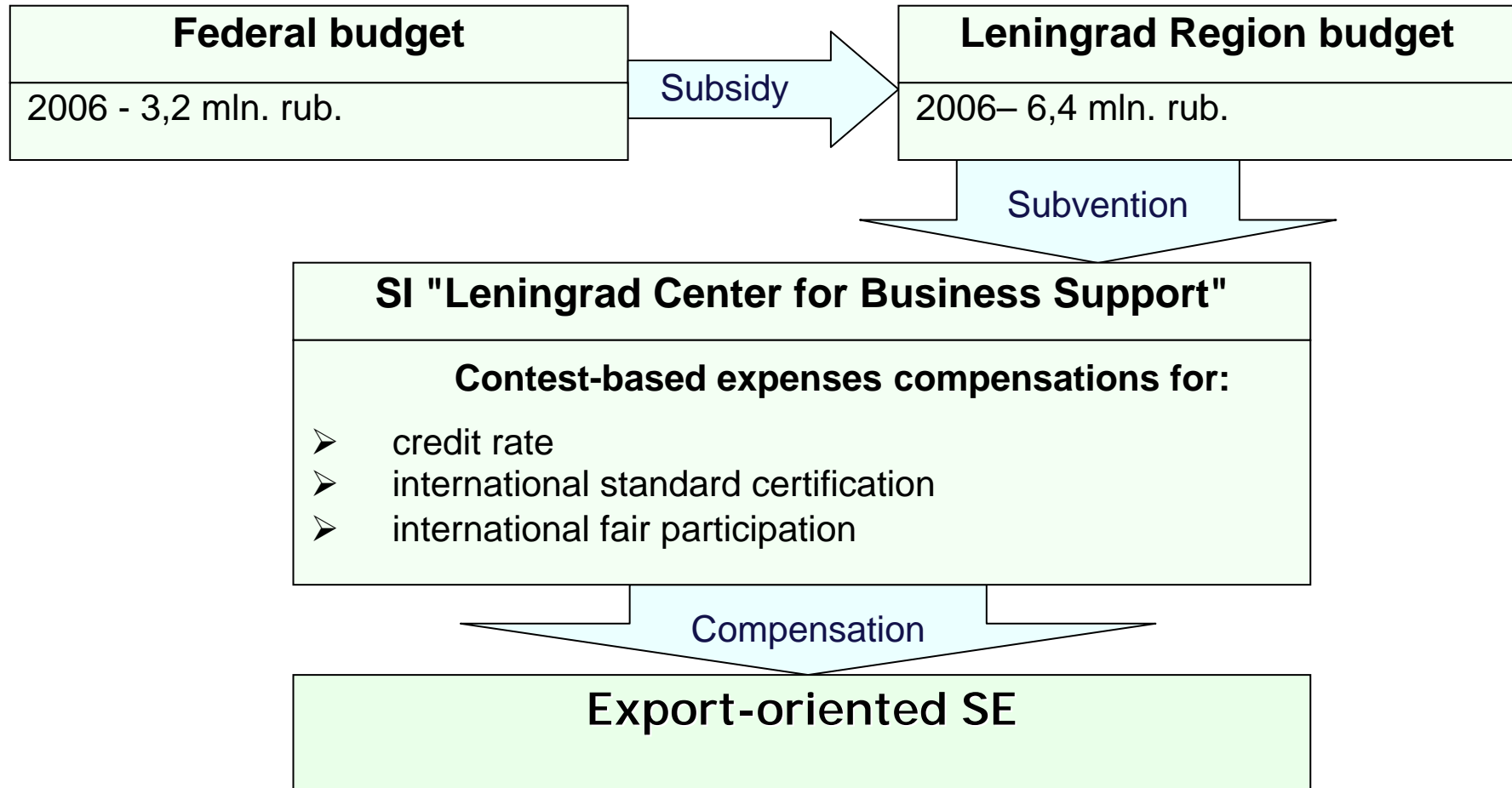
**Partial compensation of credit rate expenses
for SE. Only for loans received from Rural Development Funds (RDF)**



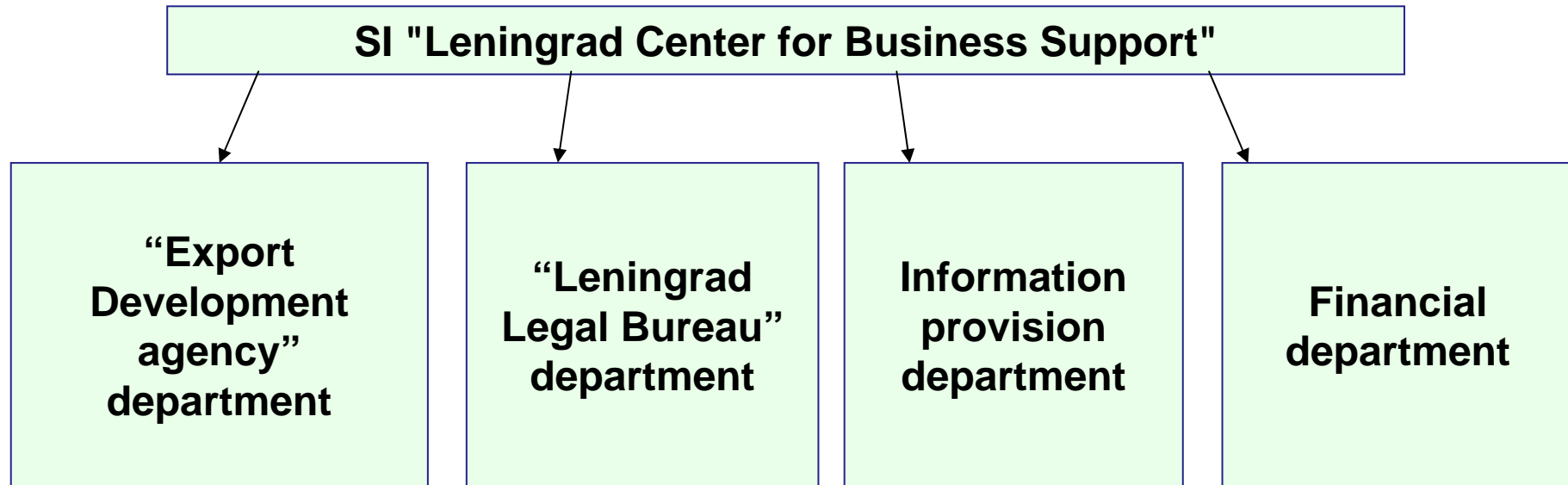
Subsidies to municipal budgets for establishment of business incubators



Partial compensation of SE expenses for foreign market entry



**Structure of State Institution
“Leningrad Region Center for Business Support”**



Basic department functions

“Export Development Agency” department

Provision of information to SE about:

- Foreign partners
- Consulting service providers (located in Russia and abroad)
- International trade shows, fairs, conferences

Advices on:

- Estimation and development of export potential
- Export expenses
- Requirements for exporters
- Customs procedures
- Taxation and VAT refund procedures
- Certification, licensing, import-export quotas
- Elaboration of international sale and purchase contracts

Seminars concerning export potential development

Foreign market researches

Basic department functions of

“Leningrad Legal Bureau” department

Free of charge consultancy services for SE on taxation, legal procedure, export, land, registration / termination and other business activity aspects

Educational seminars / training for SE regarding the legal and accounting issues of business activity

Pre-trial settlement of disputes

Analysis of SE written requests and complains

Elaboration of proposals on legislation improvement in business regulation sphere

Participation in committee for Administrative Barriers Elimination

Basic department functions

**Financial
department**

Organizational, contractual and financial provision of regional programme activities

SI accounting and book-keeping

Basic department functions

IT department

Collecting, processing, systematization and distribution of information in the interests of SE

Maintaining documents circulation with recipients of financial recourses and doers of the regional programme activities

SI web-sites maintenance

State Institution
“Leningrad Region Center for Business Support”

Address 3-167, Smolnogo st., 3
Saint-Petersburg,
191311, Russia

Tel.: +7 (812) 576-64-04

Tel./fax: +7 (812) 576-65-77

E-mail: recept@813.ru

www: www.recept.813.ru

Director: Vladimir Matyushkin